

# GOOD SHEPHERD LUTHERAN CHURCH

A Congregation of the Evangelical Lutheran Church in America

... We Are God's People and the Sheep of God's Pasture ...

Psalm 100:3



**February 16<sup>th</sup> – Sixth Sunday after Epiphany**

**ALL ARE WELCOME AT GOOD SHEPHERD LUTHERAN CHURCH.**

**God makes no exceptions. In the spirit of Jesus Christ, we offer trust and respect to all, including those who may experience alienation, distrust, or rejection.**

**We rely on the healing, unconditional love of God to shape our community in the name of the Good Shepherd.**

In keeping with our welcome, Good Shepherd is a *Reconciling in Christ* partner congregation, affirming our welcome to persons of all sexual orientations, gender identities, and gender expressions, and our commitment to anti-racism work so that all may participate fully in the life of our congregation. We are an AMMPARO *Welcoming Congregation* - Accompanying Migrant Minors with Protection, Advocacy, Representation and Opportunities.

The Good Shepherd buildings are Carbon Neutral/Net Zero Energy use.

**Welcome guests! There is more information for you on the back of the bulletin.**

# ORDER OF WORSHIP

Evangelical Lutheran Worship – **ELW (red book)**

All Creation Sings – **ACS (purple book)**

Page numbers (P.) in front of the red hymnal, (#) in back of ELW/ACS  
congregational responses in **bold**; rise in body or spirit when indicated by \*

## GATHERING

**PRAYER BELL – PRELUDE:** “Round About the Mountain” – Noel Da Costa

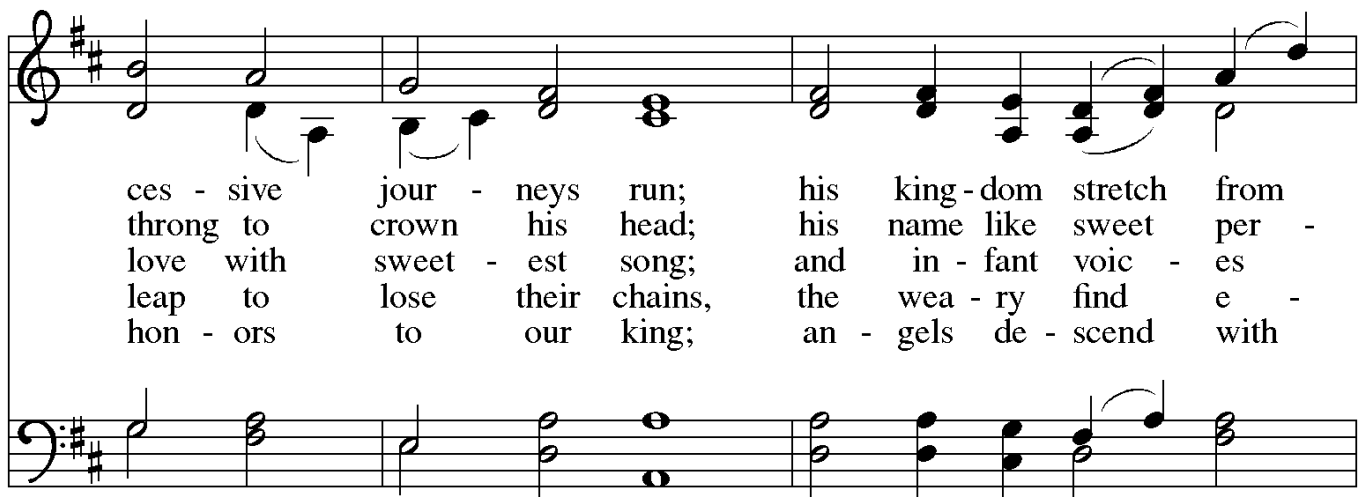
*The prelude is a time when we allow the musical offering to quiet our hearts and minds as we prepare for worship.*

## WELCOME

**GATHERING HYMN:** ELW #434 “Jesus Shall Reign”



1 Je - sus shall reign wher - e'er the sun does its suc -  
2 To him shall end - less prayer be made, and prais - es  
3 Peo - ple and realms of ev - 'ry tongue dwell on his  
4 Bless - ings a - bound wher - e'er he reigns: the pris - 'ners  
5 Let ev - 'ry crea - ture rise and bring pe - cu - liar



ces - sive jour - neys run; his king - dom stretch from  
throng to crown his head; his name like sweet per -  
love with sweet - est song; and in - fant voic - es  
leap to lose their chains, the wea - ry find e -  
hon - ors to our king; an - gels de - scend with



Text: Isaac Watts, 1674–1748, alt.  
Music: DUKE STREET, attr. John Hatton, d. 1793

shore to shore, till moons shall wax and wane no more.  
fume shall rise with ev - 'ry morn - ing sac - ri - fice.  
shall pro - claim their ear - ly bless - ings on his name.  
ter - nal rest, and all who suf - fer want are blest.  
songs a - gain, and earth re - peat the loud a - men.

## \*GREETING:

The grace of our Lord Jesus Christ, the love of God, and the communion of the Holy Spirit be with you all. **And also with you.**

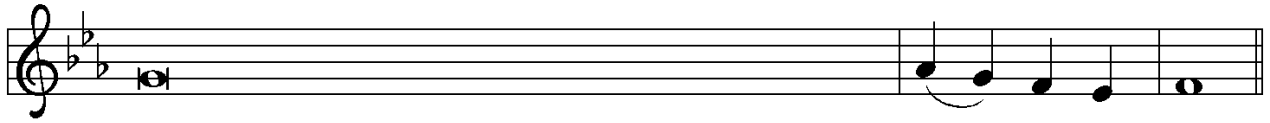
\***KYRIE:** P. 98



In peace, let us pray to the Lord.



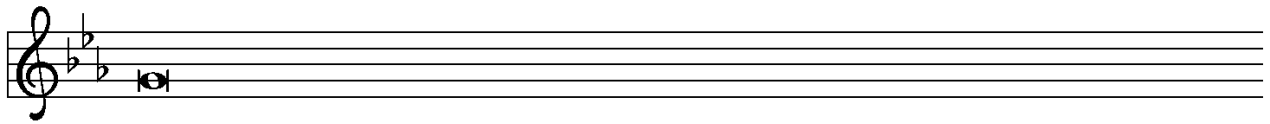
Lord, have mer - cy.



For the peace from above, and for our salvation, let us pray to the Lord.



Lord, have mer - cy.



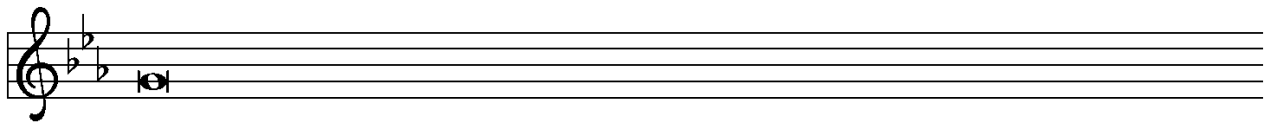
For the peace of the whole world, for the well-being of the church of God,



and for the unity of all, let us pray to the Lord.



Lord, have mer - cy.



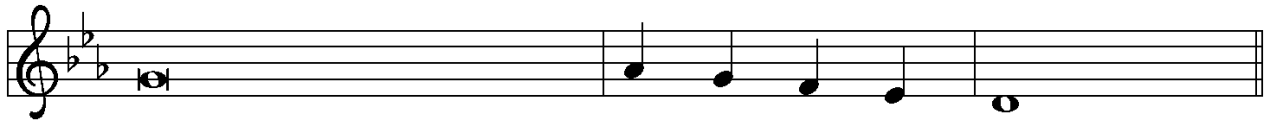
For this holy house, and for all who offer here their worship and praise,



let us pray to the Lord.



Lord, have mer - cy.



Help, save, comfort, and de - fend us, gra - cious Lord.



A - men, a - men.

**\*PRAYER OF THE DAY:** Let us pray... Amen.

**FIRST READING:** Jeremiah 17:5-10

*These verses compose a poem that is part of a larger collection of wisdom sayings that contrast two ways of life. Life with God brings blessing; the power and vitality of God is active in our life. Life without God brings a curse, the power of death.*

<sup>5</sup> Thus says the Lord: Cursed are those who trust in mere mortals and make mere flesh their strength, whose hearts turn away from the Lord. <sup>6</sup> They shall be like a shrub in the desert, and shall not see when relief comes. They shall live in the parched places of the wilderness, in an uninhabited salt land.

<sup>7</sup> Blessed are those who trust in the Lord, whose trust is the Lord. <sup>8</sup> They shall be like a tree planted by water, sending out its roots by the stream. It shall not fear when heat comes, and its leaves shall stay green; in the year of drought it is not anxious, and it does not cease to bear fruit.

<sup>9</sup> The heart is devious above all else; it is perverse—who can understand it? <sup>10</sup> | the Lord test the mind and search the heart, to give to all according to their ways, according to the fruit of their doings.

Word of God. Word of life. **Thanks be to God.**

### **PSALM: Psalm 1**

<sup>1</sup> Happy are they who have not walked in the counsel | of the wicked,  
nor lingered in the way of sinners, nor sat in the seats | of the scornful!

<sup>2</sup> **Their delight is in the law | of the LORD,  
and they meditate on God's teaching | day and night.**

<sup>3</sup> They are like trees planted by streams of water, bearing fruit in due season,  
with leaves that | do not wither;  
everything they | do shall prosper.

<sup>4</sup> **It is not so | with the wicked;  
they are like chaff which the wind | blows away.**

<sup>5</sup> Therefore the wicked shall not stand upright when | judgment comes,  
nor the sinner in the council | of the righteous.

<sup>6</sup> **For the LORD knows the way | of the righteous,  
but the way of the wicked shall | be destroyed.**

### **SECOND READING: 1 Corinthians 15:12-20**

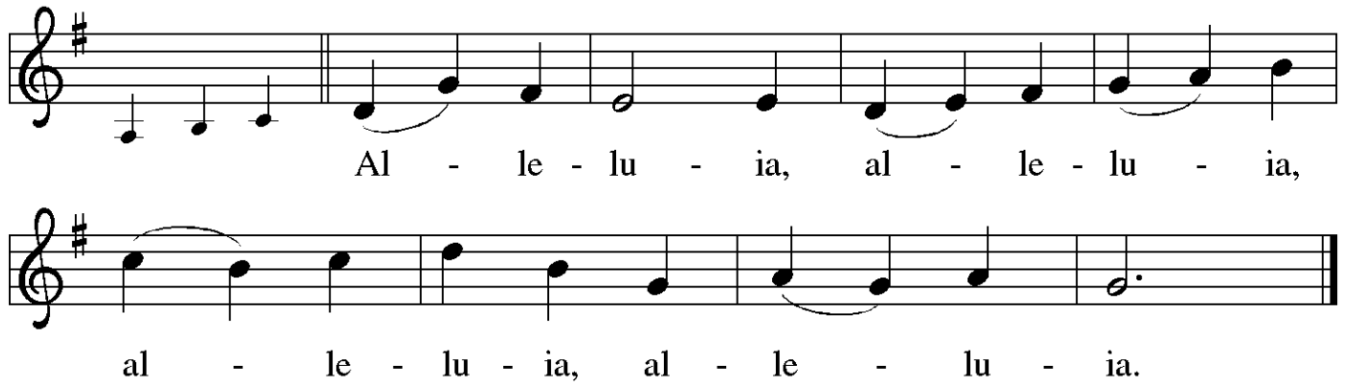
*For Paul, the resurrection of Christ is the basis for Christian hope. Because Christ has been raised, those who are in Christ know that they too will be raised to a new life beyond death.*

<sup>12</sup> Now if Christ is proclaimed as raised from the dead, how can some of you say there is no resurrection of the dead? <sup>13</sup> If there is no resurrection of the dead, then Christ has not been raised; <sup>14</sup> and if Christ has not been raised, then our proclamation has been in vain and your faith has been in vain. <sup>15</sup> We are even found to be misrepresenting God, because we testified of God that he raised Christ—whom he did not raise if it is true that the dead are not raised. <sup>16</sup> For if the dead are not raised, then Christ has not been raised. <sup>17</sup> If Christ has not been raised, your faith is futile and you are still in your sins. <sup>18</sup> Then those also who have died in Christ have perished. <sup>19</sup> If for this life only we have hoped in Christ, we are of all people most to be pitied.

<sup>20</sup> But in fact Christ has been raised from the dead, the first fruits of those who have died.

Word of God. Word of Life. **Thanks be to God.**

**\*GOSPEL ACCLAMATION:**



**\*GOSPEL READING: Luke 6:17-26**

*After choosing his twelve apostles, Jesus teaches a crowd of followers about the nature and demands of discipleship. He begins his great sermon with surprising statements about who is truly blessed in the eyes of God.*

The Holy Gospel according to Luke. **Glory to you, O Lord.**

<sup>17</sup> [Jesus] came down with [the twelve] and stood on a level place, with a great crowd of his disciples and a great multitude of people from all Judea, Jerusalem, and the coast of Tyre and Sidon.<sup>18</sup> They had come to hear him and to be healed of their diseases; and those who were troubled with unclean spirits were cured. <sup>19</sup> And all in the crowd were trying to touch him, for power came out from him and healed all of them.

<sup>20</sup> Then he looked up at his disciples and said: "Blessed are you who are poor, for yours is the kingdom of God. <sup>21</sup> Blessed are you who are hungry now, for you will be filled. Blessed are you who weep now, for you will laugh. <sup>22</sup> Blessed are you when people hate you, and when they exclude you, revile you, and defame you on account of the Son of Man. <sup>23</sup> Rejoice in that day and leap for joy, for surely your reward is great in heaven; for that is what their ancestors did to the prophets.

<sup>24</sup> "But woe to you who are rich, for you have received your consolation. <sup>25</sup> Woe to you who are full now, for you will be hungry. Woe to you who are laughing now, for you will mourn and weep. <sup>26</sup> Woe to you when all speak well of you, for that is what their ancestors did to the false prophets."

The Gospel of the Lord. **Praise to you, O Christ.**

**CHILDREN'S MESSAGE**

**SERMON**

**\*HYMN OF THE DAY: ELW #710 "Let Streams of Living Justice" (verses 1 and 3)**



1 Let streams of liv - ing jus - tice flow down up - on the earth;  
 2 For heal - ing of the na - tions, for peace that will not end,  
 3 Your ci - ty's built to mu - sic; we are the stones you seek;



give free - dom's light to cap - tives, let all the poor have worth.  
 for love that makes us lov - ers, God grant us grace to mend.  
 your har - mo - ny is lan - guage; we are the words you speak.



The hun - gry's hands are plead - ing, the work - ers claim their rights,  
 Weave our var - ied gifts to - geth - er; knit our lives as they are spun;  
 Our faith we find in ser - vice, our hope in oth - ers' dreams,



the mourn - ers long for laugh - ter, the blind - ed seek for sight.  
 on your loom of time en - roll us till our thread of life is run.  
 our love in hand of neigh - bor; our home - land bright - ly gleams.



Make lib - er - ty a bea - con, strike down the i - ron pow'r;  
 O great weav - er of our fab - ric, bind church and world in one;  
 In - scribe our hearts with jus - tice; your way—the path un - tried;



a - bol - ish an - cient ven - geance: pro - claim your peo - ple's hour.  
 dye our tex - ture with your ra - diance, light our col - ors with your sun.  
 your truth—the heart of strang - er; your life—the Cru - ci - fied.

Text: William White, b. 1924  
 Music: THAXTED, Gustav Holst, 1874-1934  
 Text © 1989 William White.  
 Duplication in any form prohibited without permission or valid license from copyright administrator.

**\*PRAYERS OF INTERCESSION:** *When indicated, respond: hear our prayer.*

**\*PEACE OF CHRIST:** The peace of Christ be with you always. **And also with you.**

*We share peace by waving to those worshipping online or through the public access channel and then with those in the sanctuary.*

**MEAL**

**OFFERTORY MUSIC**

**\*OFFERTORY SONG:** ELW #479 "We Come to the Hungry Feast"



1 We come to the hun - gry feast hun - gry for a word of peace.  
 2 We come to the hun - gry feast hun - gry for a world re - leased  
 3 We come to the hun - gry feast hun - gry that the hun - ger cease,



To hun - gry hearts un - sat - is - fied the love of God is  
 from hun - gry folk of ev - 'ry kind, the poor in bod - y,  
 and know - ing, though we eat our fill, the hun - ger will stay



not de - nied. We come, we come to the hun - gry feast.  
 poor in mind. We come, we come to the hun - gry feast.  
 with us; still we come, we come to the hun - gry feast.

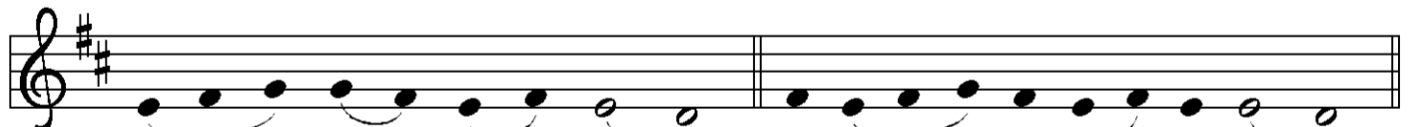
Text: Ray Makeever, b. 1943  
 Music: HUNGRY FEAST Ray Makeever  
 Text and music © 1982 Ray Makeever, admin. Augsburg Fortress.  
 Duplication in any form prohibited without permission or valid license from copyright administrator.

**\*OFFERING PRAYER:** Let us pray... Amen.

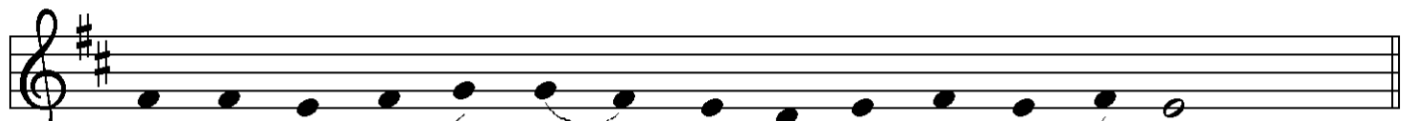
**\*GREAT THANKSGIVING – HOLY, HOLY, HOLY:**



The Lord be with you. And al - so with you.



Lift up your hearts. We lift them to the Lord.



Let us give thanks to the Lord our God.



It is right to give our thanks and praise.

It is indeed right... join their unending hymn:

Ho - ly, ho - ly, ho - ly Lord, God of  
 pow-er and might, heav-en and earth are full of your glo - ry. Ho -  
 san - na in the high-est. Blessed is he who comes in the  
 name of the Lord. Ho - san - na in the high - est.

**\*WORDS OF INSTITUTION – THANKSGIVING AT THE TABLE:** Our Father...

**HOLY COMMUNION:** *All are welcome at Christ's table.*

- *Worshippers are welcome to stand or kneel at the altar rail.*
- *Communion is served in the pews for those who wish to remain seated.*
- *If you prefer only a blessing, indicate by placing your hands over your heart.*
- *Gluten and dairy free bread and red wine/white grape juice are available to all.*
- *Egg-free wheat wafers are also available.*
- *Please place your wine and juice cups in the tray as you return to your pew.*



# COMMUNION SONG:



Lamb of God, you take a - way the sin of the world; have



mer - cy on us. Lamb of God, you take a - way the sin of the



world; have mer - cy on us. Lamb of God, you take a -



way the sin of the world; grant us peace, grant us peace.

COMMUNION HYMNS: ELW #484 "You Satisfy the Hungry Heart"

*Refrain*



You sat - is - fy the hun - gry heart with gift of fin - est wheat.



Come give to us, O sav - ing Lord, the bread of life to eat.



- 1 As when the shep - herd calls his sheep, they know and heed his voice;
- 2 With joy - ful lips we sing to you our praise and grat - i - tude
- 3 Is not the cup we bless and share the blood of Christ out - poured?
- 4 The mys - t'ry of your pres - ence, Lord, no mor - tal tongue can tell:
- 5 You give your - self to us, O Lord; then self - less let us be,

*Refrain*



so when you call your fam - 'ly, Lord, we fol - low and re - joi - ce.  
that you should count us wor - thy, Lord, to share this heav' n - ly food.  
Do not one cup, one loaf, de - clare our one - ness in the Lord?  
whom all the world can - not con - tain comes in our hearts to dwell.  
to serve each oth - er in your name in truth and char - i - ty.

Text: Omer Westendorf, 1916–1997  
Music: BICENTENNIAL, Robert E. Kreutz, 1922–1996  
Text and music © 1977 Archdiocese of Philadelphia.

Duplication in any form prohibited without permission or valid license from copyright administrator.

ELW #754 "Jesus, the Very Thought of You"



1 Je - sus, the ver - y thought of you fills us with sweet de - light;  
2 No voice can sing, no heart can frame, nor can the mind re - call  
3 O Hope of ev - 'ry con - trite soul, O Joy of all the meek,  
4 O Je - sus, be our joy to - day; help us to prize your love;



but sweet-er far your face to view and rest with - in your light.  
a sweet-er sound than your blest name, O Sav - ior of us all!  
how kind you are to those who fall! How good to those who seek!  
grant us at last to hear you say: "Come, share my home a - bove."



Text: attr. Bernard of Clairvaux, 1091–1153; tr. Edward Caswall, 1814–1878  
Music: ST. AGNES, John B. Dykes, 1823–1876

**TABLE BLESSING – PRAYER AFTER COMMUNION**

**SENDING**

**SENDING ANNOUNCEMENTS**

**\*BLESSING – SENDING SONG: ELW #726 “Light Dawns on a Weary World”**



1 Light dawns on a wea - ry world when eyes be - gin to  
 2 Love grows in a wea - ry world when hun - gry hearts find  
 3 Hope blooms in a wea - ry world when crea - tures, once for -



see all peo - ple's dig - ni - ty. Light dawns on a  
 bread and chil - dren's dreams are fed. Love grows in a  
 lorn, find wil - der - ness re - born. Hope blooms in a



wea - ry world: the prom - ised day of jus - tice comes.  
 wea - ry world: the prom - ised feast of plen - ty comes.  
 wea - ry world: the prom - ised green of E - den comes.



The trees shall clap their hands; the dry lands, gush with springs;



the hills and moun - tains shall break forth with sing - ing!



We shall go out in joy, and be led forth in peace,



as all the world in won - der ech - oes sha - lom.

Text: Mary Louise Bringle, b. 1953  
 Music: TEMPLE OF PEACE, William P. Rowan, b. 1951  
 Text © 2002 GIA Publications, Inc., 7404 S. Mason Ave., Chicago, IL 60638. www.giamusic.com. 800.442.3358.  
 All rights reserved. Used by permission.  
 Music © 2000 William P. Rowan, admin. GIA Publications, Inc., 7404 S. Mason Ave., Chicago, IL 60638.  
 www.giamusic.com. 800.442.3358. All rights reserved. Used by permission.

Duplication in any form prohibited without permission or valid license from copyright administrator.

**\*DISMISSAL: Go in peace. Live in hope. Thanks be to God.**

**PRAYER BELL – POSTLUDE: “Rocking Chair” – Florence Price**

*The postlude sends us out for service in the world. Feel free to use this time in any way that helps to send you out!*

Copyright © 2024 Augsburg Fortress. All rights reserved. License # SB118886 - Hymns: Copyright © OneLicense A-731311 New Revised Standard Version Bible, copyright © 1989 National Council of the Churches of Christ in the United States of America. Used by permission. All rights reserved worldwide.

**TODAY'S WORSHIP LEADERSHIP AND HOSPITALITY: PRESIDING & PREACHING:**  
 Pastor April Ulring Larson; **ORGANIST & PIANIST:** Brooke Joyce; **ASSISTING**  
**MINISTER:** Laura Barlament; **LECTOR/READER:** Megan Buckingham; **CANTOR:** Karin  
 Martin-Hiner; **ALTAR GUILD SERVERS:** Jeri and Reg Laursen; **USHERS:** Dave Siefken,  
 David Judisch; **GREETER:** Jan Siefken; **AUDIOVISUAL TECHNICIAN:** Carter Thompson;

FELLOWSHIP: Lyle and Sue Luzum, Laura Barlament, Dave and Jan Siefken, Diane Kruse, Megan Buckingham, Brooke Joyce.

**PLEASE HOLD OUR GOOD SHEPHERD CALL COMMITTEE IN YOUR PRAYERS:**

Megan Buckingham (Convener), Anne Clausen, Steve Holland, Karin Martin-Hiner, Bob Larson, and Leah Holland.

**EPIC/MISSION ENDOWMENT FUND ADULT FORUM TODAY: 11:00 AM,**

**Gathering Space:** Jeff Olinger, Thrivent Financial, will be at Good Shepherd to hold a discussion relating to future planning. The Forum is open to members and non-members and will be non-structured. The EPIC Scholarship/Mission Endowment Fund Committee is sponsoring the Forum as a part of the Stewardship for All Seasons concept that is used by the committee.

**ELCA MARY & MARTHA RETREAT: FRIDAY, FEBRUARY 21 - SATURDAY, FEBRUARY 22, EWALU Stone Retreat Center, near Strawberry Point –**

All ELCA women and their friends are welcome at this retreat at Camp EWALU's Stone Retreat Center, celebrating learners and doers like Mary and Martha! Sponsored by the NE IA Women of the ELCA Synod Board and Katie's Fund, the cost is \$35 if staying Friday night and Saturday (includes GF friendly Friday supper and breakfast and lunch on Saturday, as well as double-occupancy accommodations, including bedding and towels), or \$15 if attending the Saturday sessions only (includes GF friendly breakfast and lunch). On Saturday, **Pastor Susan & Norman Friedrich** (Good Shepherd members) will speak to us about the National Alliance on Mental Illness (NAMI) "Bridges of Hope." Registration is due Feb. 19<sup>th</sup>. See **Bev Sheridan** for registration forms and carpool information.

**ADULT FORUM FEBRUARY 23<sup>rd</sup>:** When we hear things that we don't expect or want—either in person or on the news—our bodies go into alarm mode. Our heart races, our palms sweat, and a host of other physical responses get triggered. And our mind goes into high gear, bringing many unwelcome (and unhelpful) thoughts. Grounding practices help us calm our bodies, which is good. But they also help us stay connected to God, the One who is with us always. This is the most important way we can prepare ourselves to take action. The Adult Forum on February 23 is a chance to learn how to do this. “Prayer Practices to Ground Us in Stressful Times” is the topic and the presenter is Jane Jakoubek.

**SERVICE OF BELONGING AT LUTHER: Monday, February 24<sup>th</sup>, 8:00 PM, Center for Faith and Life Main Hall, Luther College – The Luther Office for College Ministries** invites the Decorah community to this special evening communion worship service that will focus on the wide embrace of God's love for all people. Special prayers will be offered to commemorate the 30th anniversary of Luther College Ministries as a Reconciling in Christ partner, affirming and celebrating the gifts and whole persons of our LGBTQIA+ siblings in Christ.

**NOTE FROM FACILITIES AND GROUNDS COMMITTEE:** Please be sure that all Sanctuary doors are closed when the space is not in use. The humidification for the organ is affected when the doors are left open.

**NATIONAL LUTHERAN CHOIR CONCERT IN DECORAH: Friday, February 28<sup>th</sup>, 7:30 PM, Center for Faith and Life, Luther College –** The National Lutheran Choir, under the direction of Dr. Jennaya Robison, will present a **FREE** concert open to all, sponsored principally by Decorah Lutheran Church. The concert's theme is "Healing Body, Mind, Spirit." Director Robison is a Luther College alumna, former choir director at Luther College, former director of “Northern Lights”, and a friend of many people in our area. Along with the National Lutheran Choir, the Decorah Chorale, under the direction of member Jason Rausch, will also perform, and there will be a pop-up ecumenical choir, with singers from area congregations invited to join.

### **GLOBAL REFUGE DONATIONS NEEDED FOR RECENTLY ARRIVED REFUGEES:**

Global Refuge (previously LIRS: Lutheran Immigration and Refugee Service) received an order from the federal government on January 24 to stop serving nearly 6,000 newly arrived refugees under the organization's care, by freezing previously approved federal funding. The refugee families were **legally approved** to come through the official U.S. Refugee Admissions Program. Fleeing war, violence or persecution, they arrive with little more than the clothes on their backs and need initial assistance for housing, food, healthcare, finding work, and enrolling their children in school. Donations assure refugees sponsored through Global Refuge have access to the essential resources promised them. You can help by donating at [globalrefuge.org](http://globalrefuge.org).

**MISSION ASSISTANCE:** Thank you, Good Shepherd WELCA and Good Shepherd members, for your generous and quick replenishing our Mission Assistance Fund. The need is no longer urgent but this account can always use more funds. Thank you again for your generous and quick response.

### **OPENING FOR PART-TIME MINISTRY AND COMMUNICATIONS COORDINATOR:**

A part-time Ministry & Communications Coordinator position is currently open, due to the resignation of **Erica Yaneff**. The Ministry & Communications Coordinator assists the Pastor and works collaboratively with the Good Shepherd staff, church committees, and congregation members to fulfill the everyday function of the Church, as well as needs that arise throughout the calendar year. The Coordinator serves as the go-to person for managing communications between committees and the congregation. The creation of publications (bulletins, monthly newsletters, social media posts, special event posters, etc.) also falls under this position. For a complete job description and application form, go to [goodshepherddecorah.org/ministry-communications-coordinator](http://goodshepherddecorah.org/ministry-communications-coordinator).

**DIRECTOR OF CHILDREN AND YOUTH MINISTRY POSITION OPEN:** Good Shepherd seeks a leader for the part-time position of Director of Children and Youth Ministry, working with ages Pre-K through High School. The Director serves the wider mission of the congregation, creating, coordinating, and directly participating with children and youth in programs of learning, service, and faith formation along with the Pastor and the Education and Youth Committee. Applicants should have knowledge of the Lutheran faith; experience with children and youth activities and programs is desired. Contact the church office at (563) 382-3963.

### **RECYCLE YOUR CHRISTMAS TREE AND WINTER GREENS AT GOOD SHEPHERD:**

Old Christmas trees and winter greens are being collected for use for the Easter Vigil bonfire (this year April 19th!). **Please leave them in the space between the Annex and Mower shed.** Removal of metal and roping from wreaths and greens is appreciated!

**OFFICE HOURS THIS WEEK:** 9 AM – 12 PM Monday-Friday

## **Prayers of Healing, Care and Joy**

*Praying for others is a cherished ministry that everyone can participate in at any time. There are no time constraints to our care for others as we offer their needs up to God.*

*People on the prayer list are welcome to remain there for as long as is needed.*

### **Those with health concerns:**

- Bob Wilson
- Bob Naslund
- Mickey Slind
- Scott Barnes, *friend of Erik Berg*
- Marilyn Anderson
- Jon Wendling
- Helen Hermeier
- James Barth
- Ginny Olson
- Stephanie Hoff
- Wanda Rueber
- Stacey Nalean-Carlson
- LaVerne Ramsey
- Scott Ulring
- Phillip Swanson, *son of Ted & Joann Swanson and brother of Kristin Swanson*
- Harland Nelson
- Dennis Martin, *Marv & Mickey Slind's brother-in-law*
- Ingrid Callaghan
- Carrie Solberg
- Jutta Anderson

### **Those who grieve:**

- Sarah Wicks and family, upon the death of her grandfather Bob Fahrenkrug on Saturday, December 21<sup>st</sup>.

### **Those serving the needs of others:**

- Martha Monson Lowe
- Maryn Olson, *Director of Lutheran Disaster Response*
- Pastor Kathryn Thompson as she serves higher education students through LuMin in La Crosse

*To have a prayer request added to or removed from the Prayer List, please email Tristan at [office@goodshepherddecorah.org](mailto:office@goodshepherddecorah.org) or call (563) 382-3963.*



# Good Shepherd Worship Schedule

## **Sunday, February 16<sup>th</sup>:** *Sixth Sunday after Epiphany*

Worship at 9:30 AM; Sanctuary; with Holy Communion

Preaching and Presiding: Pastor April Ulring Larson

Fellowship Time: 10:45 AM; Fellowship Hall; treats provided by the Purple Flock

Adult Forum: EPIC Scholarship / Mission Endowment Fund; 11:00 AM;  
Gathering Space

## **Sunday, February 23<sup>rd</sup>:** *Seventh Sunday after Epiphany*

Worship at 9:30 AM; Sanctuary; with Holy Communion

Preaching and Presiding: Pastor Stacey Nalean-Carlson

Fellowship Time: 10:45 AM; Fellowship Hall; treats provided by the Purple Flock

Adult Forum: Prayer Practices to Ground us in Stressful Times; 11 AM;  
Gathering Space

## **Sunday, March 2<sup>nd</sup>:** *Transfiguration Sunday*

Worship at 9:30 AM; Sanctuary; with Holy Communion

Preaching: Pastor Susan Friedrich

Presiding: Pastor April Ulring Larson

Fellowship Time: 10:45 AM; Fellowship Hall; treats provided by the Pink Flock

**WELCOME TO ALL GUESTS and especially to Luther College Students!** It is a joy to worship with you. You are welcome to enjoy really great coffee, juice, treats, and conversation down the hall after worship – follow the crowd. Sit anywhere!

**ALL ARE WELCOME TO SHARE IN HOLY COMMUNION.** It is Christ's table and Christ is the host. Instructions are included in the communion section of the Order of Worship.

**THE PRESENCE, ENERGY, AND NOISE OF CHILDREN ARE MOST WELCOME HERE!**

The sound of a child in worship is the sound of a new Christian being formed. This congregation is glad to share in this work. We welcome and encourage kids to move and play. A nursery with toys and activity bags is available. Mothers are welcome to nurse anywhere that works.

**RACIAL JUSTICE STATEMENT:** This Statement was approved at the annual meeting of the congregation on February 6th, 2022. It was developed through the work of the Racial Justice Team which held listening sessions with the congregation. Find the full statement at [goodshepherddecorah.org/Racial-Justice-Statement](https://goodshepherddecorah.org/Racial-Justice-Statement) or by scanning the code.



*We trust in the new life made possible through Christ's resurrection and we are hopeful that the Church is an ideal place to engage in the lifelong and transformative work of racial justice. Fostering antiracist ideas and actions is one way that we can follow Jesus' example of love for our neighbor. When we fail, we will rely on God's grace, that God might work in and through our broken humanity and that we might be sustained to learn from our mistakes and continue to show up for the work of antiracism. (2 Corinthians 5:17-18)*

**GOOD SHEPHERD STAFF:**

Pastor April Ulring Larson  
(563) 217-0741  
[pastorapril@goodshepherddecorah.org](mailto:pastorapril@goodshepherddecorah.org)  
Brooke Joyce; Music Director  
Tristan Occhipinti; Office & Building Manager  
Mike Sammons; Custodian



**Good Shepherd  
Lutheran Church**

701 Iowa Ave  
Decorah, IA 52101

(563) 382-3963

[goodshepherddecorah.org](https://goodshepherddecorah.org)  
[office@goodshepherddecorah.org](mailto:office@goodshepherddecorah.org)